

Family Resource Partners

Catherine Haugh, Roseville City Treasurer
Guest Community Center
Hungry Howies
Macomb Daily
Macomb Intermediate School District
Mayor John Chirkin
Noni 's Restaurant
Roseville Community Schools
Roseville Parks & Recreation
Warren Parks & Recreation

Active Partners

American Lutheran Church
Big Family of Michigan
Catholic Services of Macomb
Catholic Social Services
Children 's Center
Child Help
Domestic Violence Interventions
Family Youth Interventions
Girl Scouts of Southeastern Michigan
Grandparents Raising Grandchildren
Homes for Black Children
I.J. Campbell City of Roseville
Jireh, Inc.
Judson Center
Leaps & Bounds Family Services
Macomb County DHS
Macomb Family Services
MSU Extension
Mt. Calvary Church
Orchard 's Children 's Service
SMART Bus
Sacred Heart Catholic Church
Spaulding for Children
Turning Point
Trinity United Methodist Church



31900 Utica Road
Fraser, MI 48026

586.541.0033
586.541.0034 (fax)

Helpful Links & Hotlines

CARE

Parent Education - 586-541-0033
Substance Use Evaluations - 586-541-2273
www.careofmacomb.com

Department of Human Services

Warren District - 586-427-0600
www.michigan.gov/dhs

Health Department

St. Clair Shores - 586-466-6800

Macomb County Crisis Center

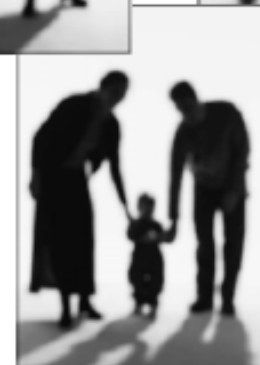
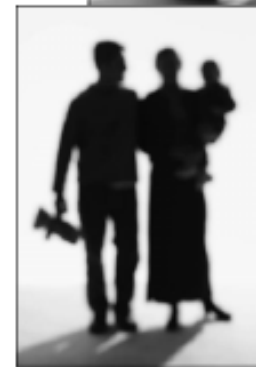
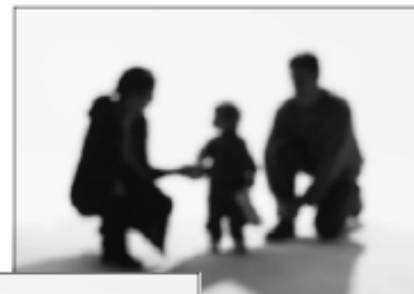
586-307-9100

Turning Point Crisis Line

586-463-6990

United Way Referral Line

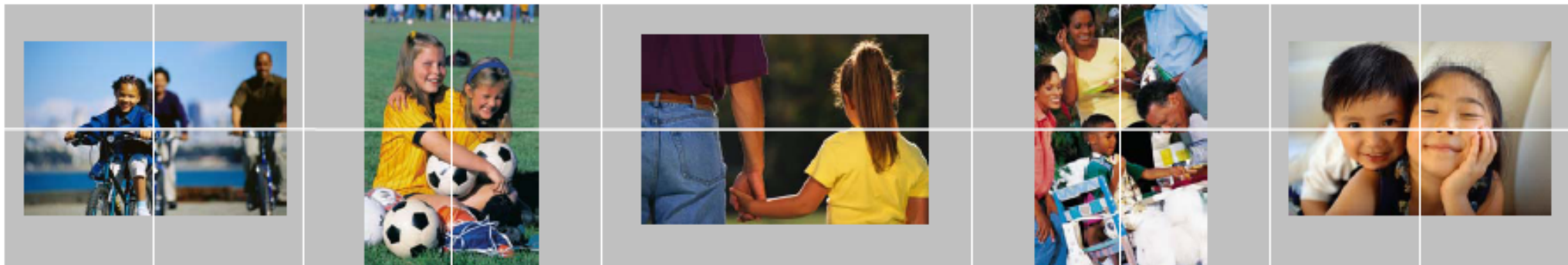
211 (from any land line)
800-552-1183 (from any cell phone)



If you are interested in becoming a part of the work group, or want more information, please contact your local Community Specialist at:

Roseville—586.585.0351
Warren—586.758.1253
Clinton Twp.—586.868.0351

Strengthening & empowering families by coordinating community-based support services.



What is the Family Resource Network?

The Family Resource Network is a community collaborative of supportive social services agencies and community representatives who assist families in local area communities.

Our Mission

To strengthen and empower families through prevention and intervention.

Guiding Principles

The members of the Family Resource Network partner for the purpose of protecting children and supporting families by honoring the following guiding principles:

- All children deserve a family
- All families need the support of their community
- DHS, services providers, and neighborhoods need each other to support families

Who is eligible for our services?

- Any area resident who needs information and/or referrals for supportive services
- Any local family member who has involvement with Macomb County Children's Protective Services or Foster Care
- Anyone who resides in Macomb County and has custody of a child who is involved with Macomb County Children's Protective Services or Foster Care
- Foster parents, adoptive parents and relative caregivers who live in Macomb County

How can we help you?

- Provide ongoing neighborhood support to assist you and your family
- Identify services and provide referrals to complete your Parent/Agency Agreement
- Assist you in Team Decision Making Meetings with Children's Protective Services or Foster Care
- Assist in arranging neighborhood visitation for children that are in Foster Care
- Individuals that are interested in becoming foster parents who live in Macomb County

How do we help foster parents, adoptive parents and relative caregivers?

- Monthly support groups
- Free events and recreational opportunities for children and families
- Provide supportive services and community referrals
- Bi-monthly newsletter containing informational articles, listings of upcoming community events and new resources available.

How do we help prospective foster parents?

- Referrals to pre-service training and licensing
- Assistance with questions through the licensing process
- Assistance with minor home repairs to meet licensing requirements